

Wimbledon Community Forum

Neighbourhood planning / Rob Cowan



OUR TOWN OUR PLAN

THE
RESIDENTS'
PLAN

ROAD THE BROADWAY HARTFIELD ROAD
SOUTH PARK ROAD QUEEN'S ROAD FRANCIS

THE FUTURE OF WIMBLEDON

MERTON HIGH STREET DUDLEY ROAD KINGS
HILL ROAD PRINCES ROAD MANSEL ROAD
WYNE ROAD HIGH STREET LANCASTER RO
LADSTONE ROAD COMPTON ROAD KINGS
GRANGE WOODSIDE MARRYAT ROAD
SHBOURNE TERRACE BELVEDERE GROVE
ALEXANDRA ROAD GRAHAM ROAD MERTON
CHURCH ROAD RIDGWAY ROAD RAYMOND RO
AD BERTRAM COTTAGES WORPLE ROAD
GEORGES ROAD LINGFIELD ROAD SOUTH
EULAH ROAD KINGSTON ROAD RUSSELL F

Proposals for the future of Wimbledon,
produced for public discussion

by

The Wimbledon Town Centre Co-ordinating Group

&

The Wimbledon Society

JULY 1984







CONNECTING FARRINGTON TO THE ELIZABETH LINE

FROM DECEMBER 2018

A fleet of new trains

- A train every 2½ minutes at peak times.
- Nine walk-through carriages.
- Space for 1,500 people.
- Air-conditioning.
- CCTV, WiFi and live travel information.
- Environmentally efficient.



HOT TALKED
SELL

ELIZABETH LINE TO
Canary Wharf

CONNECTING
FARRINGDON
TO THE **ELIZABETH LINE**

A fleet of new trains

- A train every 2½ minutes at peak times.
- Air-conditioning.
- Nine walk-through carriages.
- CCTV, WiFi and live travel information.
- Space for 1,500 people.
- Environmentally efficient.



ELIZABETH LINE TO

Canary Wharf

YOUR FIRST CROSSRAIL TRAIN WILL BE DELAYED ... BY A YEAR

» BIG EMBARRASSMENT FOR MAYOR AND MINISTERS

Jonathan Prynne Consumer Business Editor

THE launch of Crossrail train services through central London has been delayed for almost a year in a major setback for the flagship infrastructure project. Plans to start running the train through the tunnel between

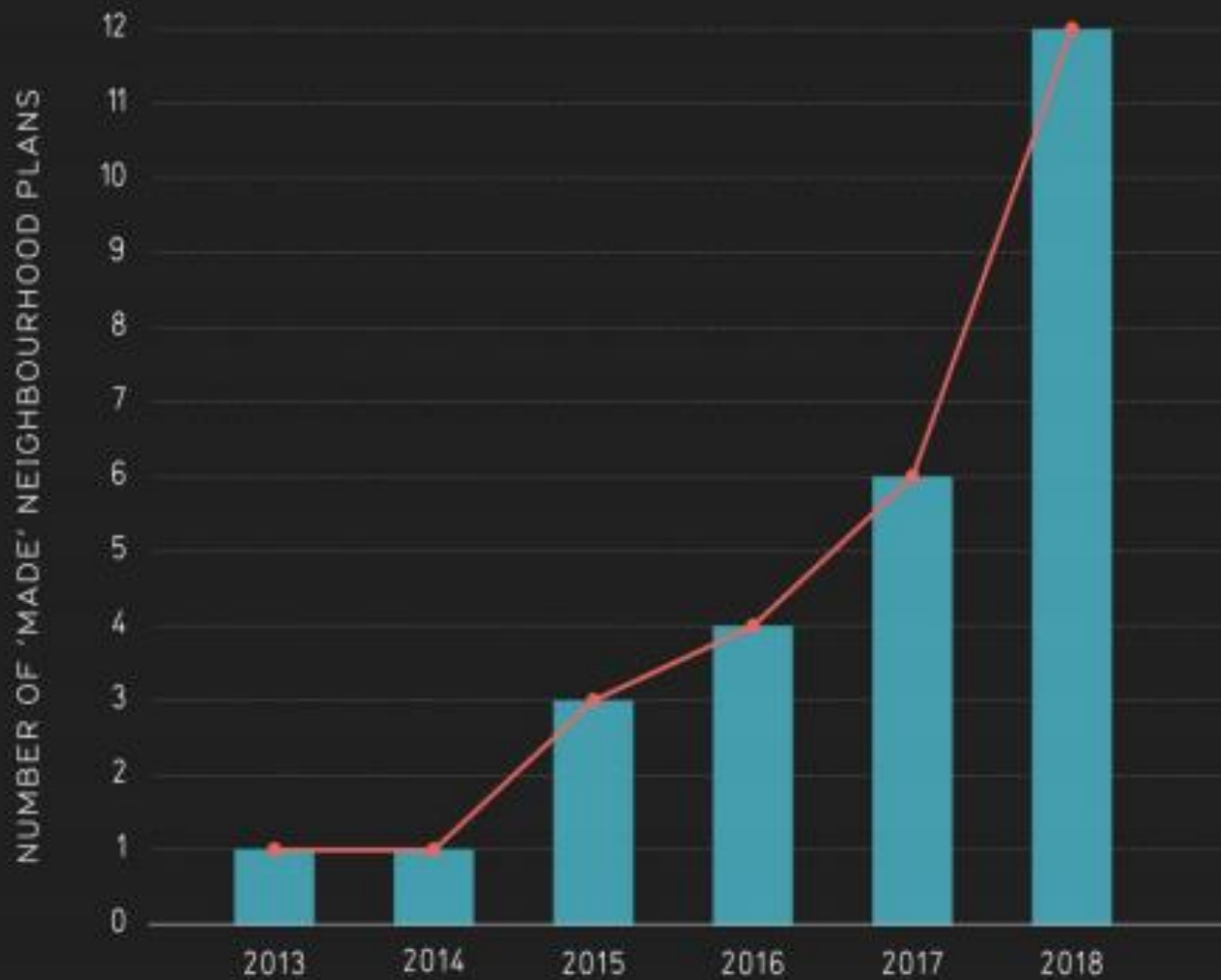
hold-up, a huge embarrasment for Mayor and Ministers.



2,500 neighbourhoods
(120 in London)

75% of local authorities

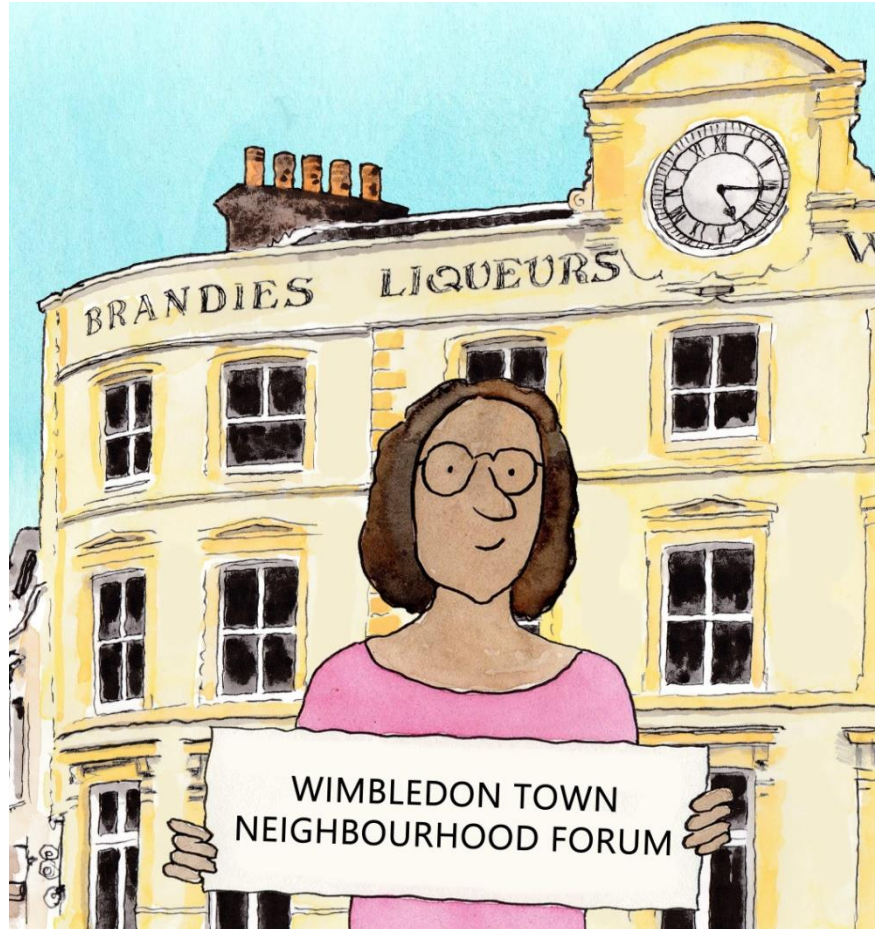
More neighbourhood
plans than local plans



THE NUMBER OF 'MADE' NEIGHBOURHOOD PLANS IS GROWING, AND THE NUMBER OF COMPLETIONS PER YEAR IS ALSO INCREASING

THE COMPLETE NEIGHBOURHOOD

A neighbourhood plan for Wimbledon town



Aim of the neighbourhood plan

To make Wimbledon a flagship of sustainable, environmentally-friendly, healthy and economically prosperous urban living.



FOUR MAIN PRIORITIES

Housing

To ensure that the types of housing and their locations enable Wimbledon to be a pleasant, safe and inclusive residential community that promotes health, wellbeing and economic prosperity for the whole community.

Employment and economic prosperity

To make Wimbledon a vibrant hub of economic success, enabling many residents to live and work in the town without the need to commute, and providing opportunities to work, live, play and retire.

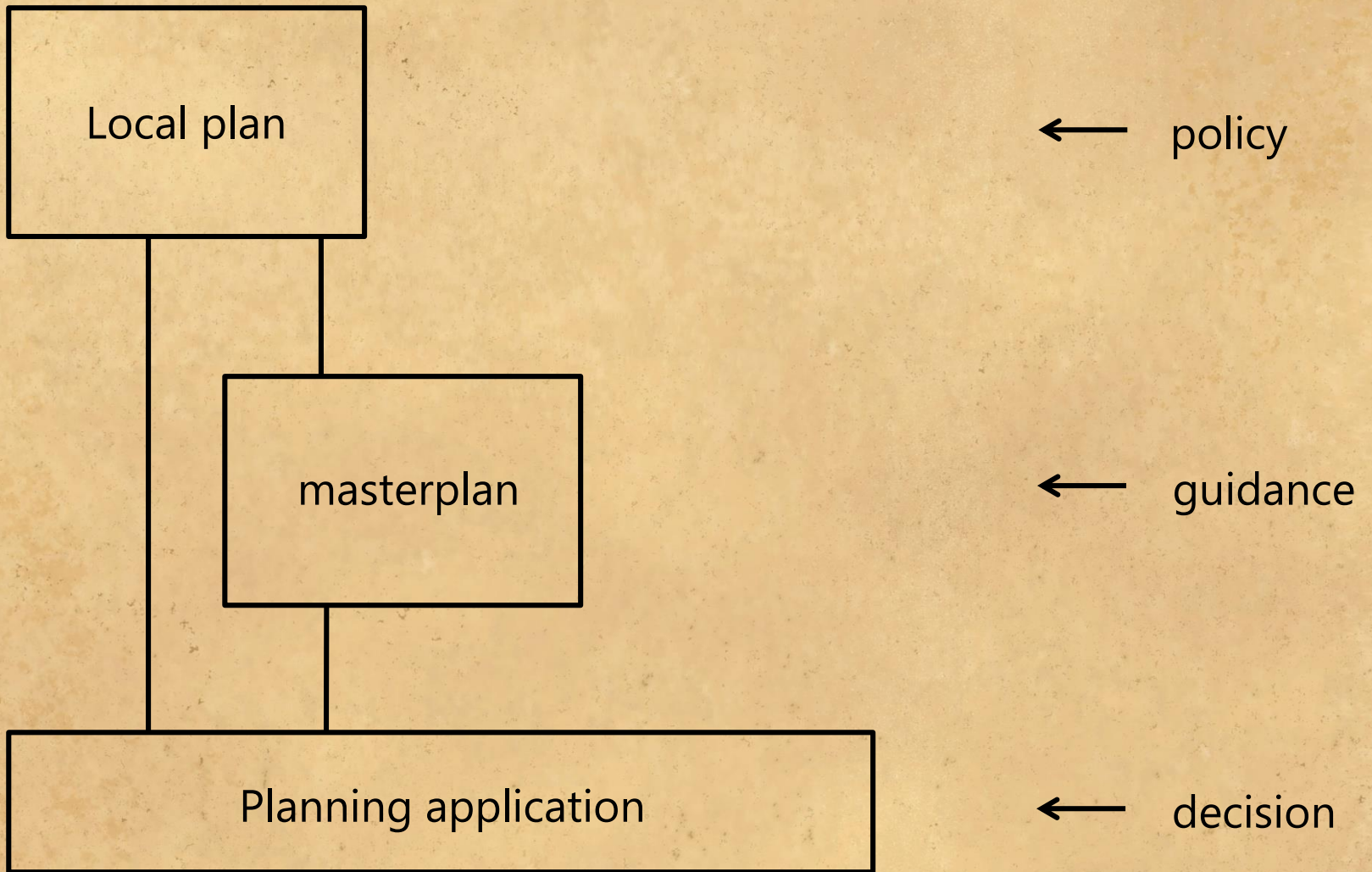
Health

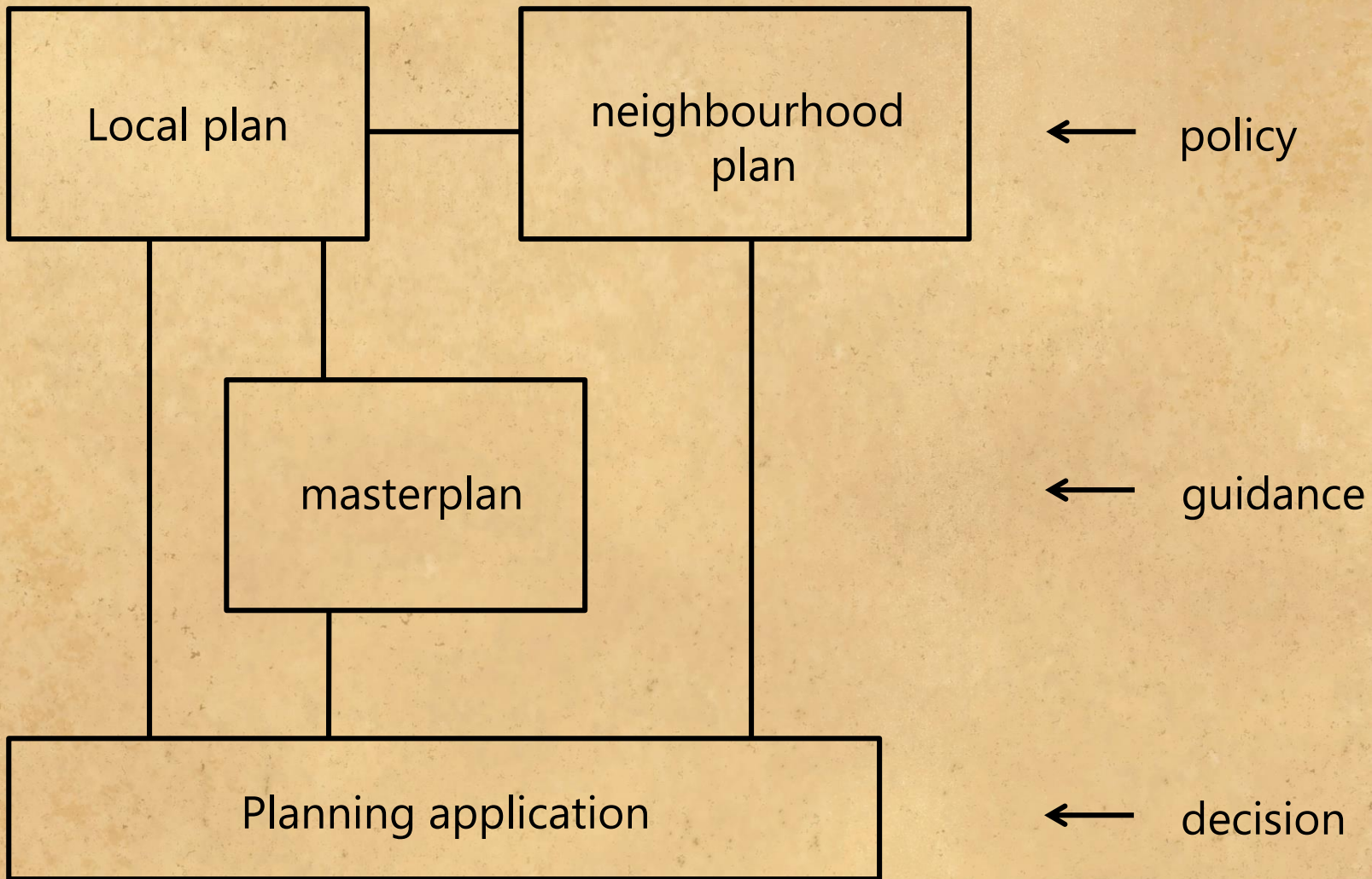
To make Wimbledon a haven for the health benefits of living, working and playing within an environmentally and economically sustainable place.

Historic, natural and built environment

To protect and enhance Wimbledon's heritage assets, to provide net gains for nature, and to meet the challenges of climate change.









DESIGN QUALITY

WIMBLEDON'S DNA: TYPOLOGY AND MATERIALS

Group 1: Portland Stone



Group 2: Red brick / terracotta



Group 3: London stock brick



DESIGN QUALITY

WIMBLEDON'S DNA IN A NEW WAY

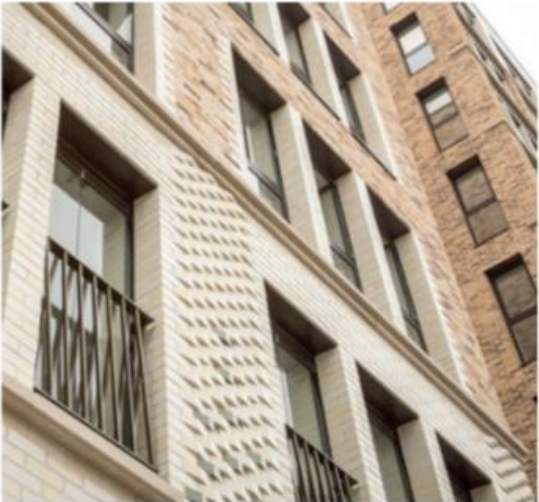
Group 1



Group 2



Group 3





P Permit holders only
Mon - Sat
8.30 am - 6.30 pm

74



BRIDGES ROAD
MEWS SW19 

SW19
LET & MANAGED
020 8544 2828
www.SW19.com



Paul's BARBER
020 8715 6884

IT WIZARDS DRY CLEANERS
020 8716 8554

020 8716 8554
Milkers Park (B293)
Other car parks

DesignPoint All Interiors
Kids Furniture • Tiles

HomeVagabond
People, kitchens & washrooms - value stores

Y Cleaners

MILKERS

Amity

WHAT'S ON

020 8716 8554

020 8716 8554

020 8716 8554

020 8716 8554

020 8716 8554

020 8716 8554

020 8716 8554

020 8716 8554

020 8716 8554

020 8716 8554

020 8716 8554

020 8716 8554

020 8716 8554

020 8716 8554



WIMBLEDON
LIBRARY

SPACE

THE ALEXANDRA

GDS1NDU



SINCLAIR
1854-2005

SINCLAIR THE FINE JEWELLERS

Victorian Cafe

Victorian Cafe

I & S LOCKSMITHS
KEYS - LOCKS - SAFES - GRILLES - ALARMS
Tel: 01473 3845 Fax: 01473 3338

BURGLARY PREVENTION
SPECIALISTS IN ALL TYPES OF KEY CUTTING

andrew purnell
020 8679 7888

Sales - Lettings - Block Management

Reflections 2 Est. 1984

Hairdressing
2 the pavement 020 8946 4475

ART
www.artjewels.co.uk
Certified Diamonds • Bespoke

THE ELEMENT

Reflections 2



1897

1895

rentalsandsales.co.uk
RESIDENTIAL PROPERTY CONSULTANTS





Centre
Court
Shopping

WIMBLEDON
PUBLIC BATHS





QUALITY STITCH



POLICE



NEW
WIMBLEDON
THEATRE

1910

AN AFF...

WELCOME TO A NEW AREA OF THEATRE



UNDERGROUND

Wimbledon

Wimbledon



020 8946 8444

Flowers & P





OPEN
24/7
HOURS

CRYSTALS

refabrics
Dry Cleaners.

European Laundry
Laundry Service
Dry Cleaning
Embroidery & Tailoring

TIMPSON

The Quality Barbecue People

uip

GREGGS

JACKS

OF LONDON

THE ORIGINAL MODERN BARBER

JACKS

OF LONDON

TAXIS

OF LONDON







65 THE BROADWAY

20
ZONE

65 THE BROADWAY

Deliver to loading

Blue directional sign with a white arrow pointing up and a white 'P' symbol, indicating a parking zone.

Blue directional sign with a white arrow pointing up and a white 'P' symbol, indicating a parking zone.

Blue directional sign with a white arrow pointing up and a white 'P' symbol, indicating a parking zone.

Blue directional sign with a white arrow pointing up and a white 'P' symbol, indicating a parking zone.

Blue directional sign with a white arrow pointing up and a white 'P' symbol, indicating a parking zone.

Blue directional sign with a white arrow pointing up and a white 'P' symbol, indicating a parking zone.

Blue directional sign with a white arrow pointing up and a white 'P' symbol, indicating a parking zone.

Blue directional sign with a white arrow pointing up and a white 'P' symbol, indicating a parking zone.

Blue directional sign with a white arrow pointing up and a white 'P' symbol, indicating a parking zone.

Blue directional sign with a white arrow pointing up and a white 'P' symbol, indicating a parking zone.

Blue directional sign with a white arrow pointing up and a white 'P' symbol, indicating a parking zone.



Premier Inn

MAJESTIC

MAJESTIC



MAC
FEEDBACK DENNY
WATER FULLA
What's your thing
MAC NEW OPEN IN L25

dermalogica
skin care
dermalogica
dermalogica

Top cosmetics at eLys

eLys

dermalogica
skin care
dermalogica
dermalogica

eLys



WALES





STARBUCKS COFFEE

STARBUCKS COFFEE

HS BANK

Blue hoodie and dark trousers of a person in the foreground.

93
93





UNIQLO

UNIQLO

Nuffield Health
fitness & wellness →

visit our
FLORIST GREAT RANGE
& BEAUTIFUL RANGE

no entry

Unite
Barton



WILSON
RESIDENTIAL

20
ZONE

20
ZONE

THE
BUNDAWAY

WILSON
RESIDENTIAL

LY16 8XU

WILSON
RESIDENTIAL



Antoinette Hotel

Antoinette Hotel

Chinese Cuisine

MORRIS HOUSE



Chemist

STERLING HOUSE

2-4 St George's Road

NatWest

NatWest

elys

elys

1488 RTU

6J2EHU

E175

198 JKT

198 JKT

198 JKT









HSBC  UK

HSBC  UK







STANLEY ROAD



NO ENTRY



Premier Inn



SOMEONE GOT A FEE
FOR DESIGNING THIS





T.K. maxx

Blue arrow sign pointing up









BRANDIES

LIQUEURS

WINES

PRINCE OF WALES

BURGER KING

Linnings Shop

Food
Coffees
Cakes
Linnings

LG14 NFT



YMCA

HOLDEN JONES FINANCIAL RECRUITMENT
020 8540 5208

Lebara mobile WIMBLEDON FOOD & WINE

Lebara

The Historic
Wimbledon
Tennis Centre
Wimbledon, London

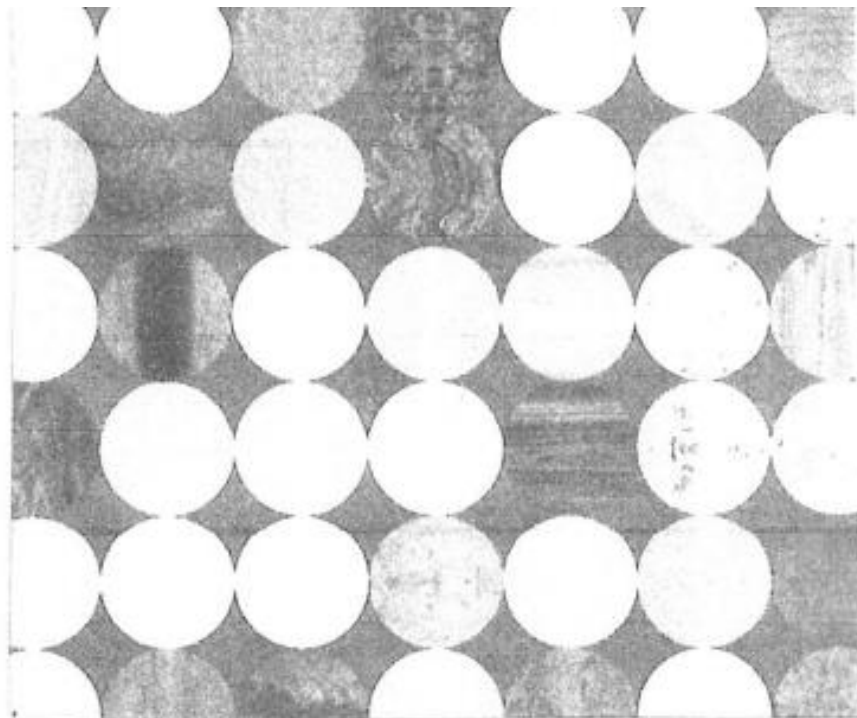
TODAY



TOMORROW?



THE BROADWAY SOUTH PARK ROAD MANSSELL ROAD
SIR CYRIL BLACK WAY TRINITY ROAD RUSSELL ROAD
ST GEORGE'S ROAD MONTAGUE ROAD KING'S ROAD
HARTFIELD CRESCENT QUEEN'S ROAD PRINCE'S ROAD
WORPLE ROAD MEWS GLADSTONE ROAD ALT GROVE
ALEXANDRA ROAD HARTFIELD ROAD TABOR GROVE
GRAHAM ROAD VICTORIA CRESCENT ALWYNNE ROAD
BEULAH ROAD ASHBOURNE TERRACE STANLEY ROAD
WIMBLEDON HILL ROAD THE PIAZZA FRANCIS GROVE
HERBERT ROAD DUNDONALD ROAD RAYMOND ROAD
PALMERSTON ROAD COMPTON ROAD WORPLE ROAD



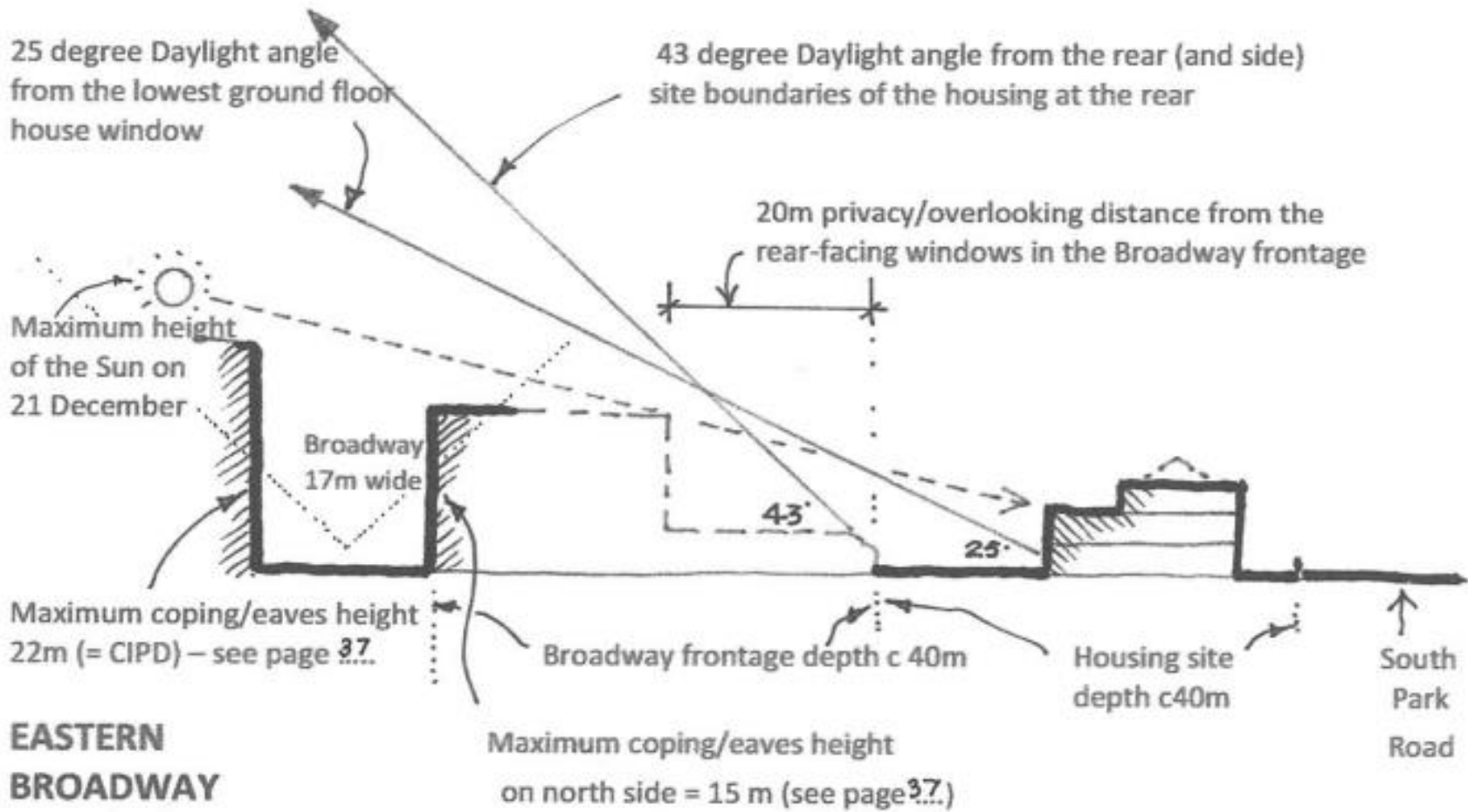
2018

VISION 2040

**Proposals for
Wimbledon Town Centre**

TYPICAL CROSS SECTIONS
NORTH-SOUTH
LOOKING WEST

through The Broadway, which runs east to west
Showing Daylighting and Privacy constraints
as they affect the frontage to the Broadway
and the relationship to the housing behind



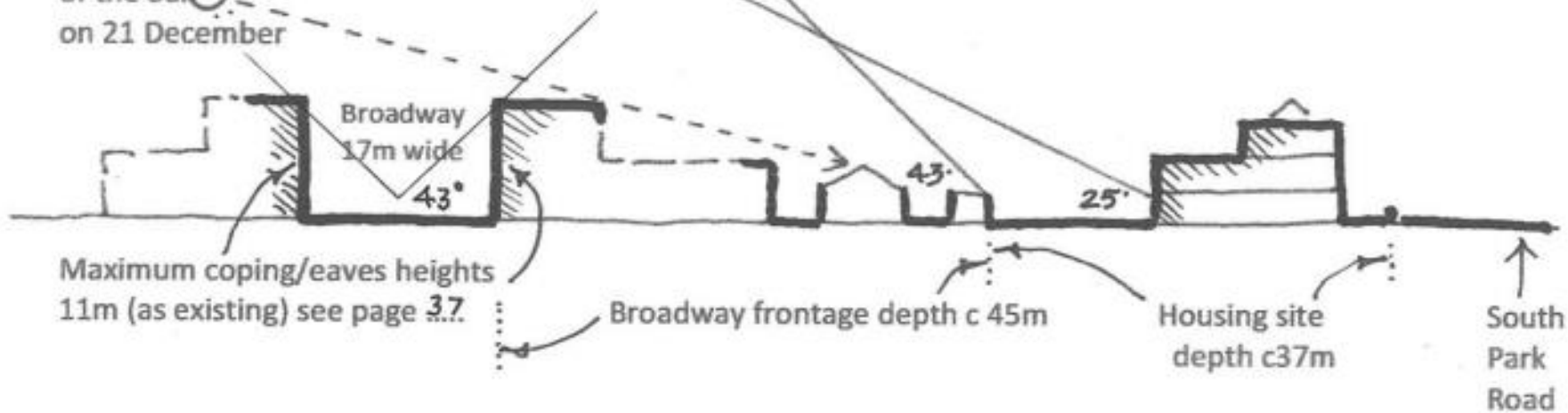
EASTERN BROADWAY

25 degree Daylight angle from the lowest ground floor house window

43 degree Daylight angle from the rear (and side) site boundaries of the housing at the rear

20m privacy /overlooking distance from the rear-facing windows in the Broadway frontage

Maximum height of the Sun on 21 December

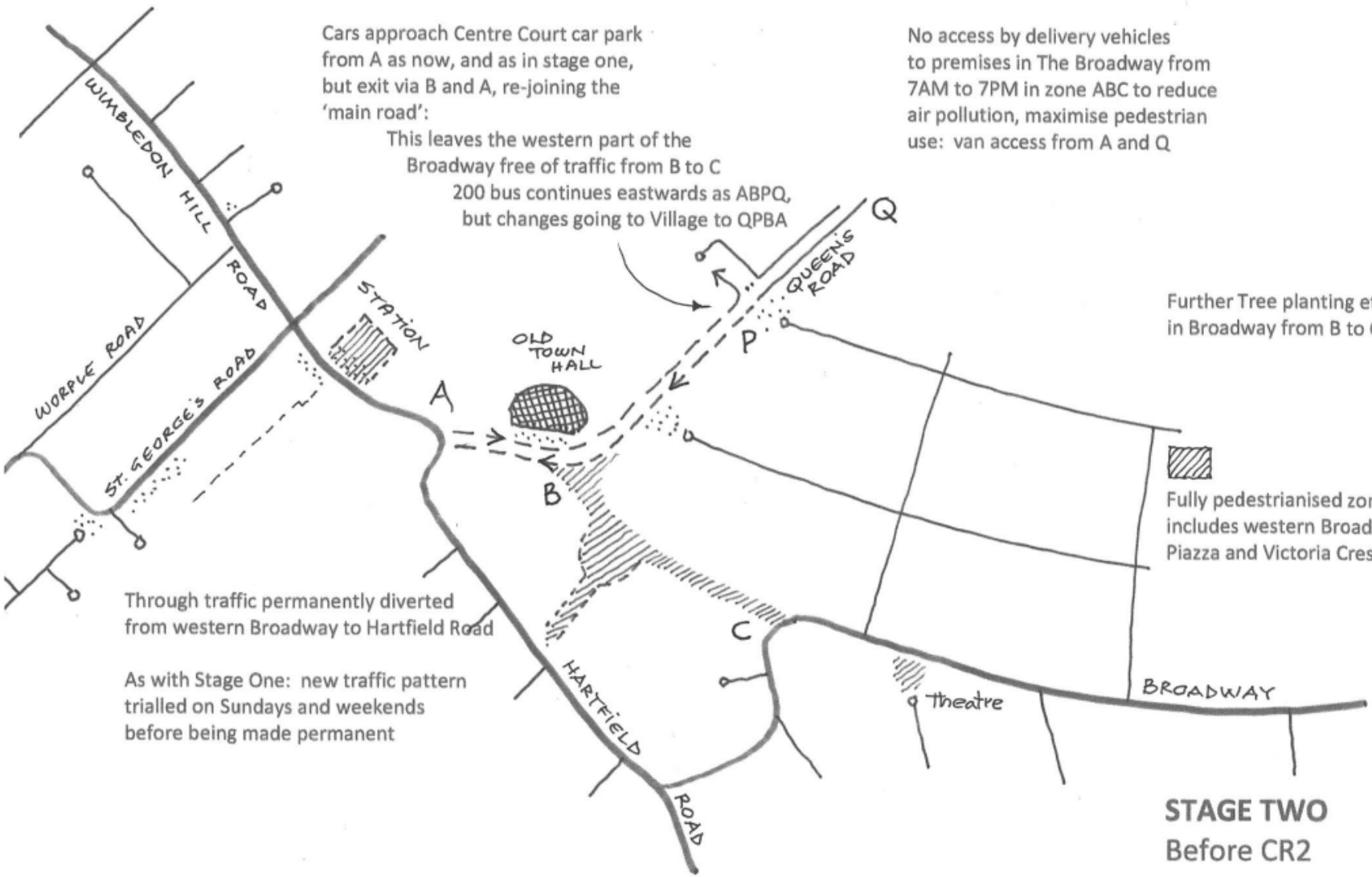


Maximum coping/eaves heights 11m (as existing) see page 3.7

Broadway frontage depth c 45m

Housing site depth c37m

South Park Road




Cars approach Centre Court car park from A as now, and as in stage one, but exit via B and A, re-joining the 'main road':

This leaves the western part of the Broadway free of traffic from B to C
 200 bus continues eastwards as ABPQ, but changes going to Village to QPBA

No access by delivery vehicles to premises in The Broadway from 7AM to 7PM in zone ABC to reduce air pollution, maximise pedestrian use: van access from A and Q

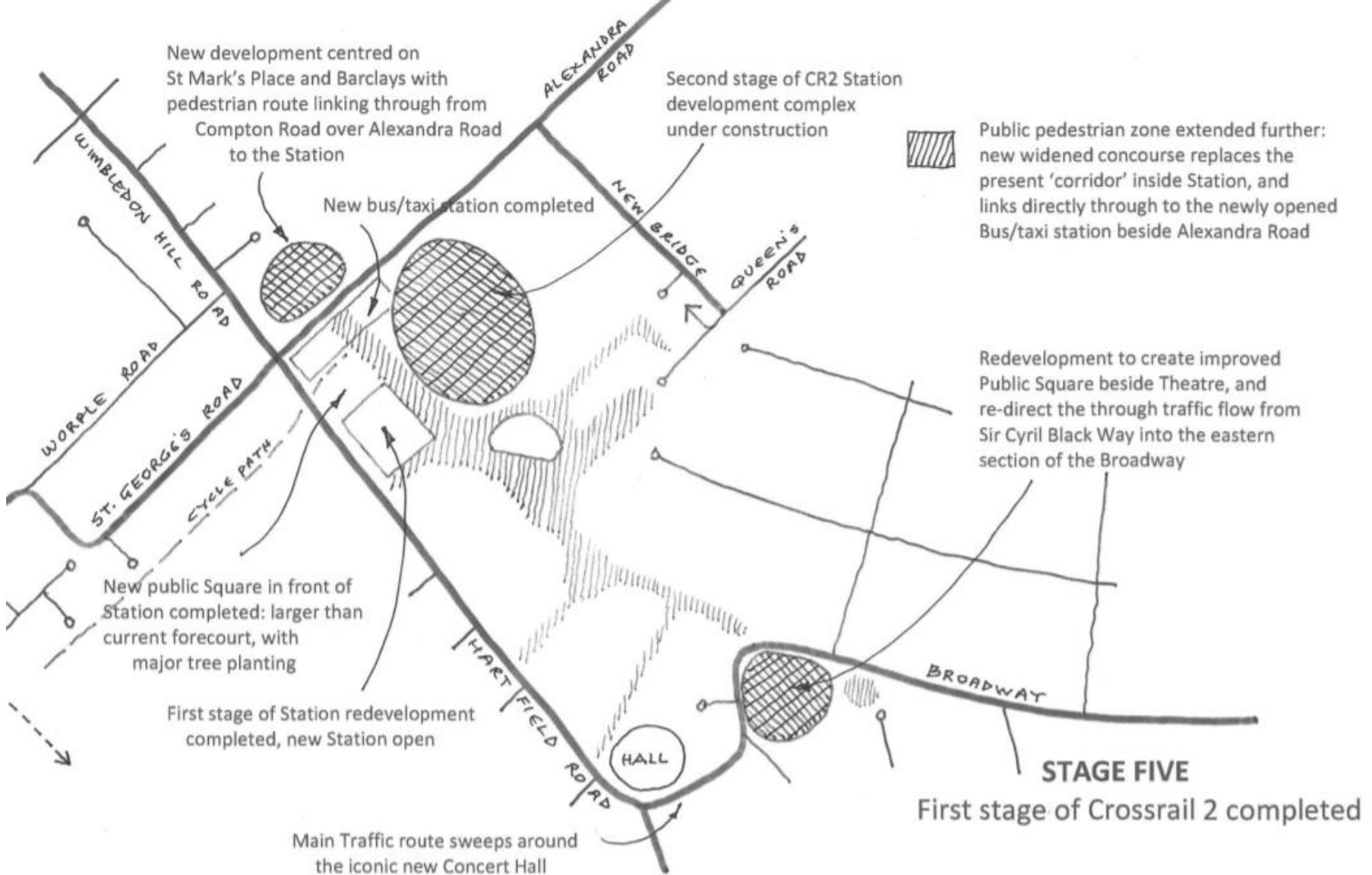
Further Tree planting etc in Broadway from B to C

 Fully pedestrianised zone now includes western Broadway, Piazza and Victoria Crescent

Through traffic permanently diverted from western Broadway to Hartfield Road

As with Stage One: new traffic pattern trialled on Sundays and weekends before being made permanent

STAGE TWO
Before CR2



FITNESS

ADAPTABILITY

SPACE

BEAUTY

MOVEMENT

RESOURCES



wimbledonforum@gmail.com